

# **Classic life**

## **131S**





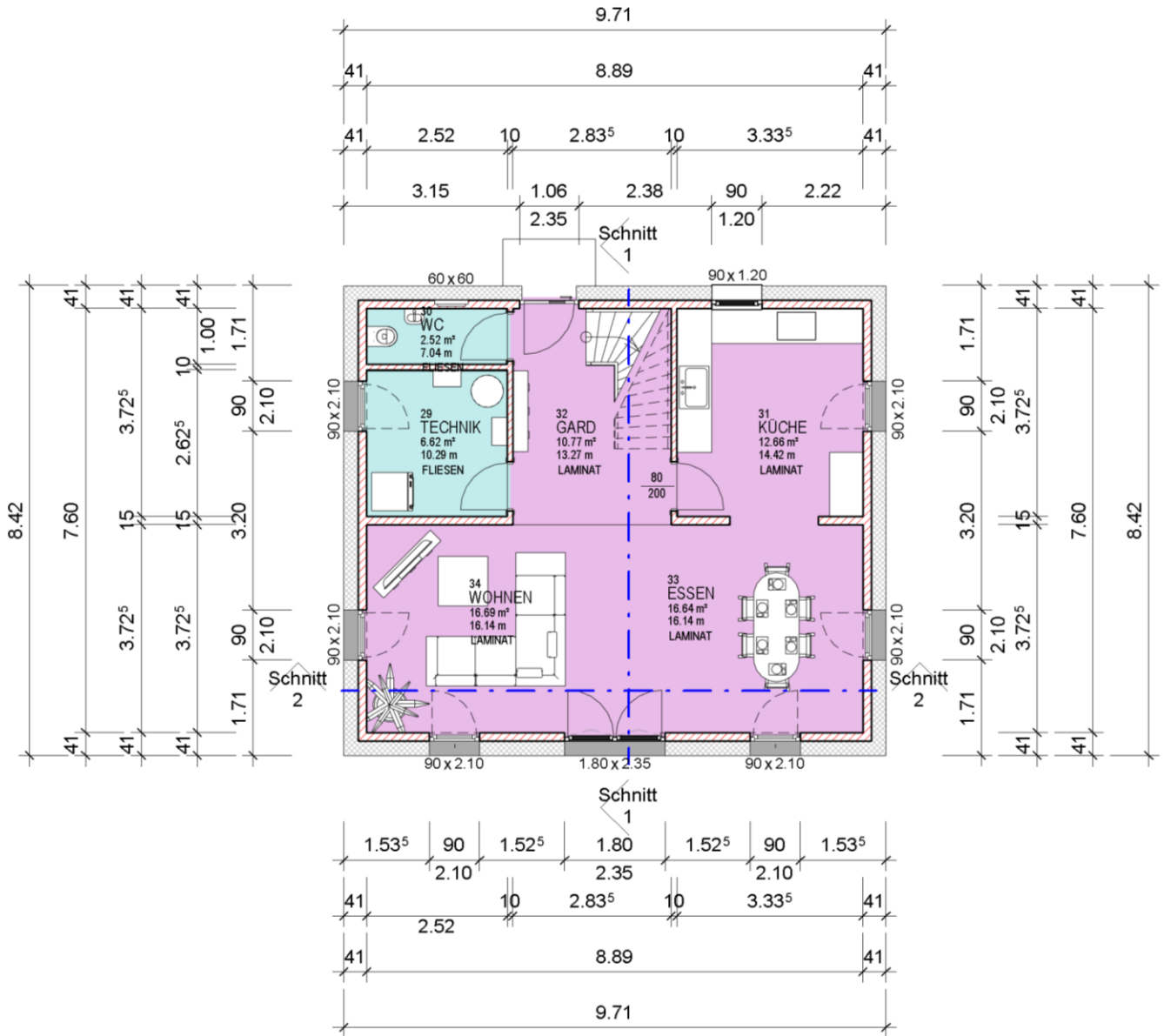
## EG Verkauf

M 1 : 100



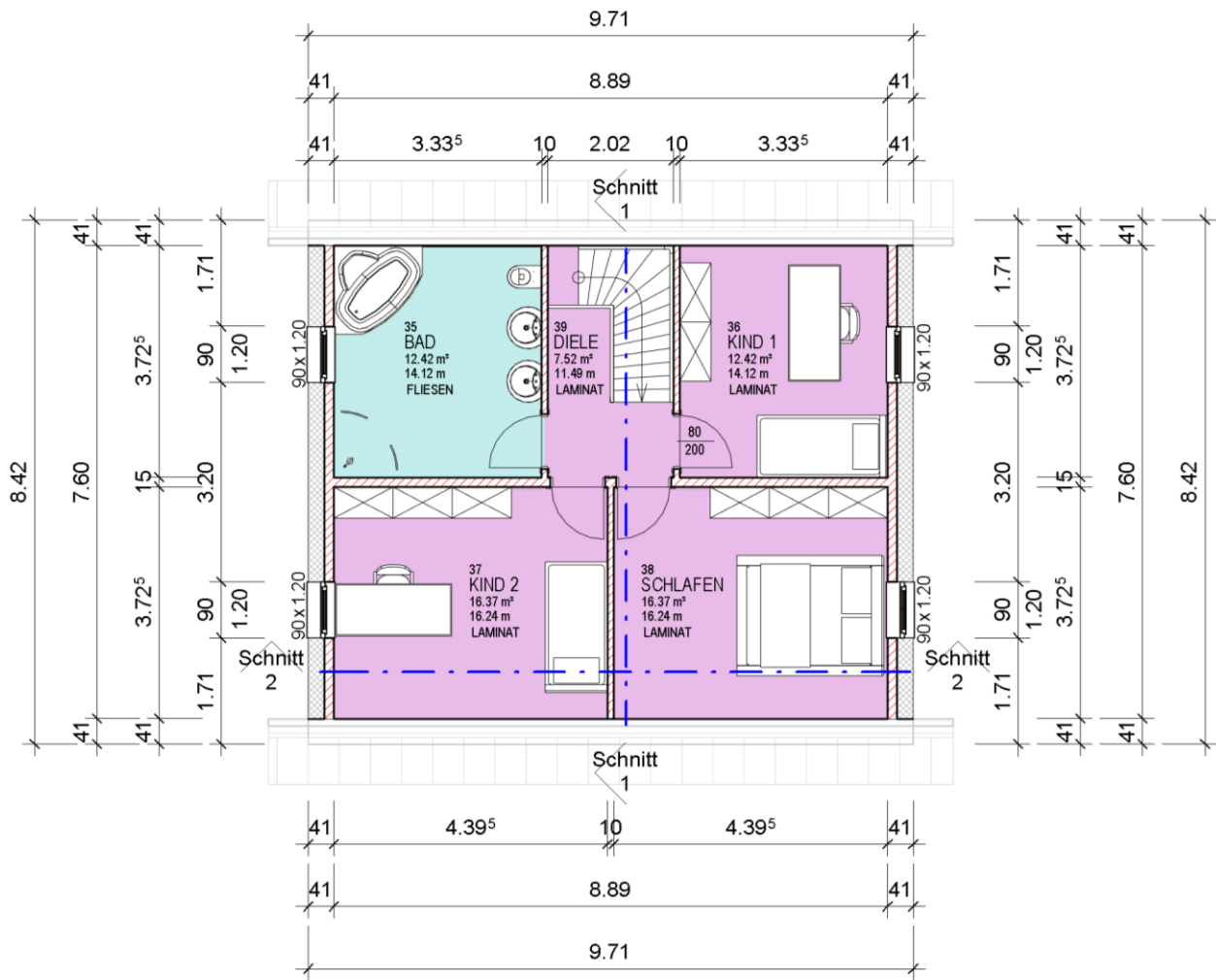
## OG Verkauf

M 1 : 100



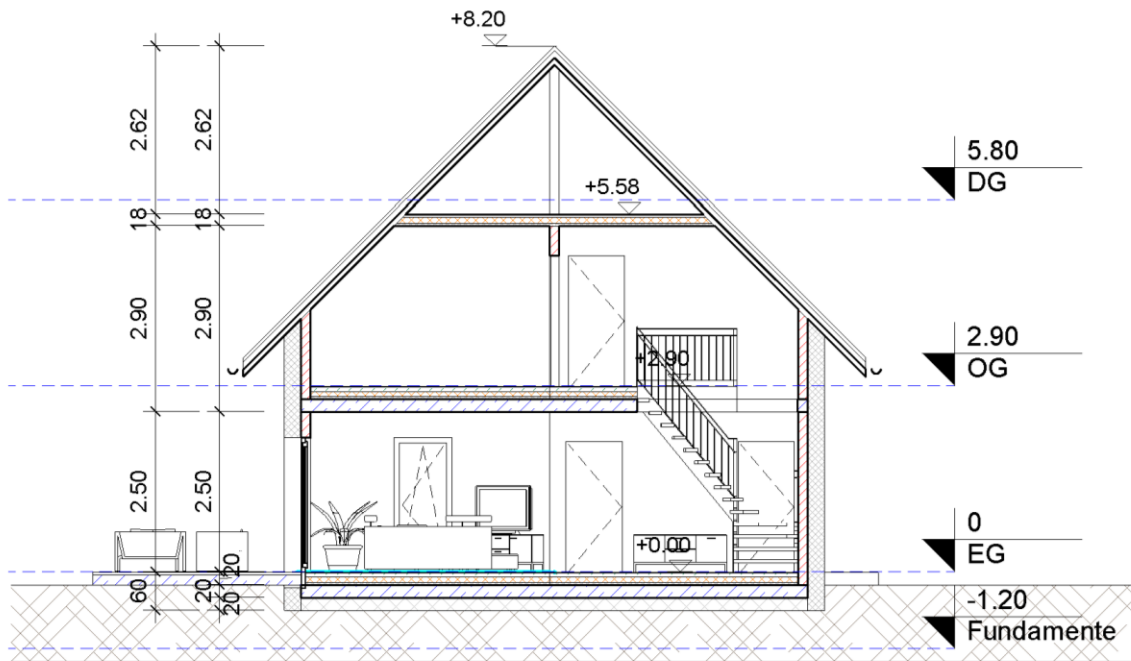
## EG bemaßt

M 1 : 100



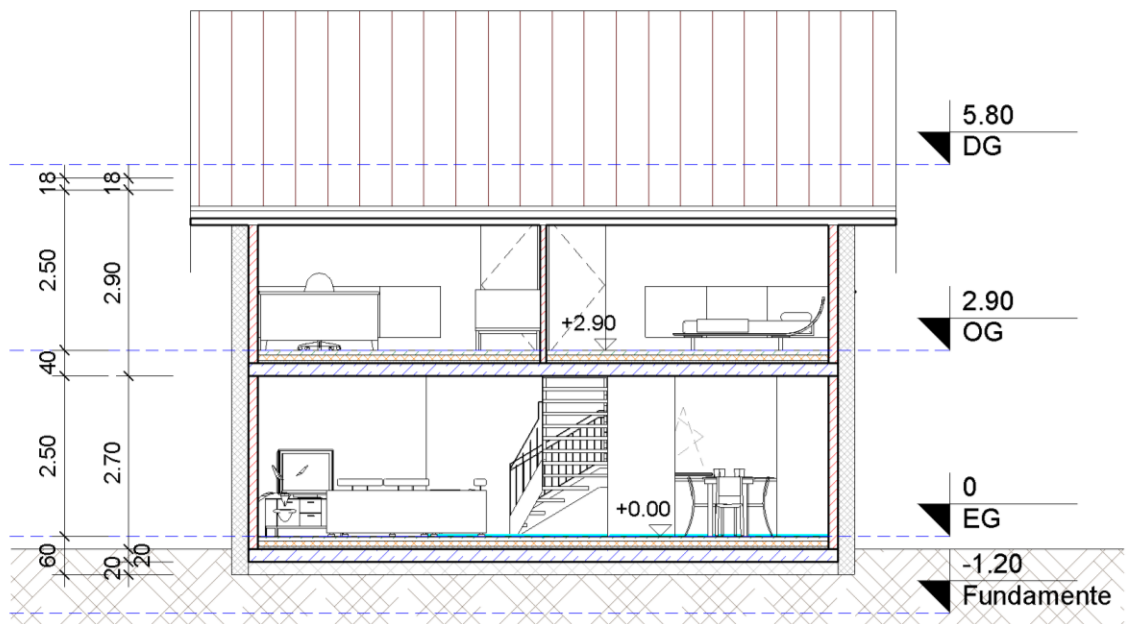
## OG bemaßt

M 1 : 100



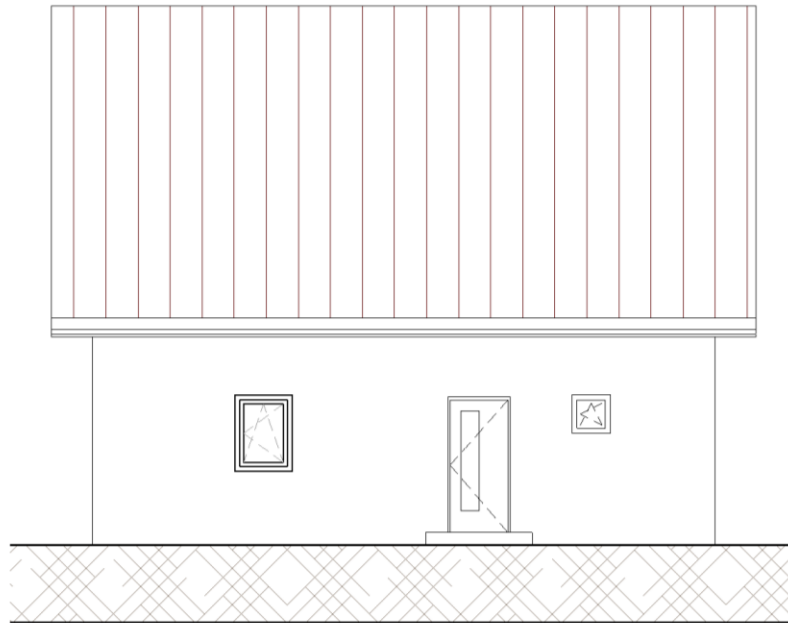
## Schnitt 1

M 1 : 100



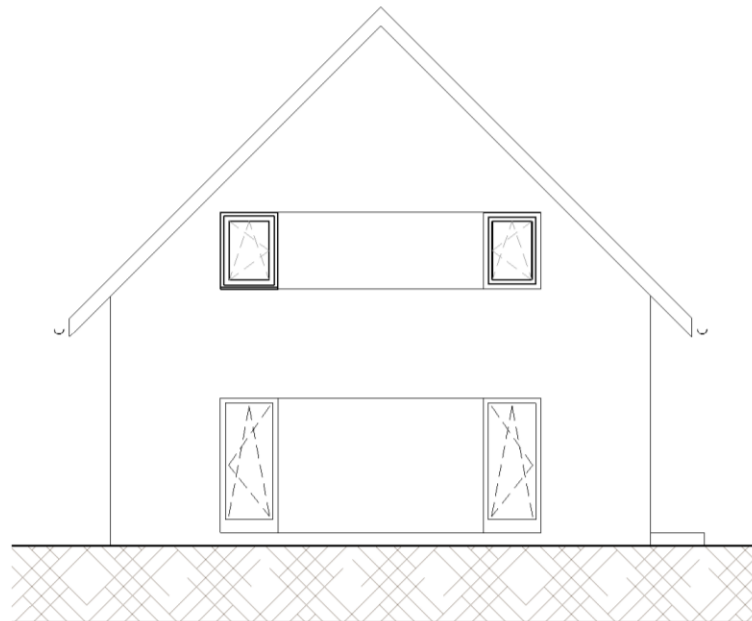
## Schnitt 2

M 1 : 100



## Nord

M 1 : 100



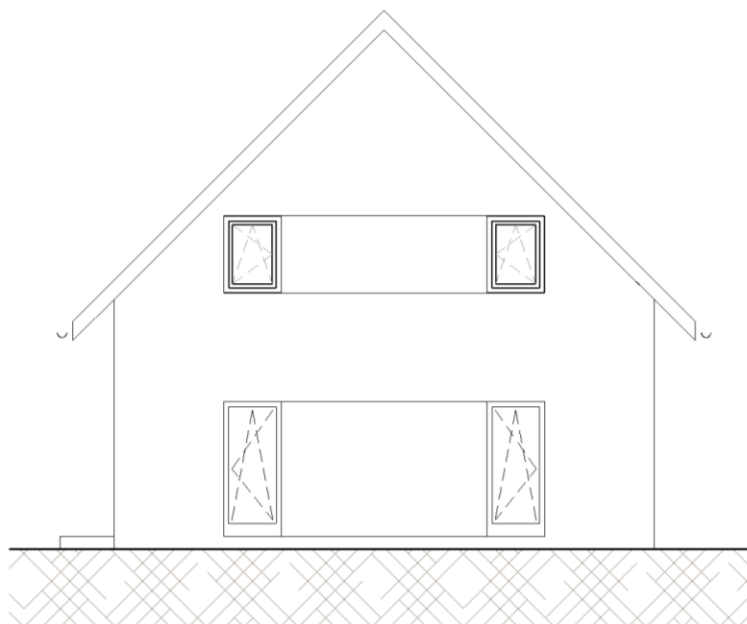
## Ost

M 1 : 100



## Süd

M 1 : 100



## West

M 1 : 100

Wandliste			
Anzahl	Breite	Typ	Fläche

**Liapor 10cm**

1	0.100	Liapor 10cm	10.19 m <sup>2</sup>
1	0.100	Liapor 10cm	12.16 m <sup>2</sup>
1	0.100	Liapor 10cm	8.09 m <sup>2</sup>
1	0.100	Liapor 10cm	6.12 m <sup>2</sup>
1	0.100	Liapor 10cm	6.80 m <sup>2</sup>
1	0.100	Liapor 10cm	10.19 m <sup>2</sup>
6			53.54 m <sup>2</sup>

**Liapor 15cm**

1	0.150	Liapor 15cm	20.06 m <sup>2</sup>
1	0.150	Liapor 15cm	2.84 m <sup>2</sup>
1	0.150	Liapor 15cm	7.07 m <sup>2</sup>
1	0.150	Liapor 15cm	2.16 m <sup>2</sup>
4			32.13 m <sup>2</sup>

**Liapor 20cm VWS 20cm**

1	0.410	Liapor 20cm VWS 20cm	28.47 m <sup>2</sup>
1	0.410	Liapor 20cm VWS 20cm	24.01 m <sup>2</sup>
1	0.410	Liapor 20cm VWS 20cm	12.46 m <sup>2</sup>
1	0.410	Liapor 20cm VWS 20cm	23.91 m <sup>2</sup>
1	0.410	Liapor 20cm VWS 20cm	12.46 m <sup>2</sup>
1	0.410	Liapor 20cm VWS 20cm	23.91 m <sup>2</sup>
1	0.410	Liapor 20cm VWS 20cm	24.03 m <sup>2</sup>
1	0.410	Liapor 20cm VWS 20cm	24.01 m <sup>2</sup>
8			173.26 m <sup>2</sup>
Gesamt: 18			258.93 m <sup>2</sup>

Türliste				
Anzahl	Typ	Breite	Höhe OK FFB	Höhe OK RFB

1	90 x 210_FB 20	1.060	2.350	2.350
1	80 x 200_FB 20	0.880	2.240	2.240
1	FB-20 80 x 200	0.880	2.240	2.240
1	FB-20 80 x 200	0.880	2.240	2.240
1	FB-20 80 x 200	0.880	2.240	2.240
1	80 x 200_FB 20	0.880	2.240	2.240
1	80 x 200_FB 20	0.880	2.240	2.240
1	80 x 200_FB 20	0.880	2.240	2.240
8				

Raumliste			
Nr.	Name	Fläche	Ebene

**EG**

29	TECHNIK	6.62 m <sup>2</sup>	EG
30	WC	2.52 m <sup>2</sup>	EG
31	KÜCHE	12.66 m <sup>2</sup>	EG
32	GARD	10.77 m <sup>2</sup>	EG
33	ESSEN	16.64 m <sup>2</sup>	EG
34	WOHNEN	16.69 m <sup>2</sup>	EG

 EG: 6 65.90 m<sup>2</sup>
**OG**

35	BAD	12.42 m <sup>2</sup>	OG
36	KIND 1	12.42 m <sup>2</sup>	OG
37	KIND 2	16.37 m <sup>2</sup>	OG
38	SCHLAFEN	16.37 m <sup>2</sup>	OG
39	DIELE	7.52 m <sup>2</sup>	OG

 OG: 5 65.11 m<sup>2</sup>

 Gesamt: 11 131.01 m<sup>2</sup>

Fensterliste				
Anzahl	Familie	Typ	Rohbaumaße	
			Breite	Höhe

**A\_Fenster 1-flg**

1	A_Fenster 1-flg	60*60	0.600	0.600
1				

**A\_Fenstertür 1-flg**

1	A_Fenstertür 1-flg	90 x 225	0.900	2.100
1	A_Fenstertür 1-flg	90 x 225	0.900	2.100
1	A_Fenstertür 1-flg	90 x 225	0.900	2.100
1	A_Fenstertür 1-flg	90 x 225	0.900	2.100
1	A_Fenstertür 1-flg	90 x 225	0.900	2.100
1	A_Fenstertür 1-flg	90 x 225	0.900	2.100
6				

**Fenster 1-flügelig**

1	Fenster 1-flügelig	DK 900*1200	0.900	1.200
1	Fenster 1-flügelig	DK 900*1200	0.900	1.200
1	Fenster 1-flügelig	DK 900*1200	0.900	1.200
1	Fenster 1-flügelig	DK 900*1200	0.900	1.200
1	Fenster 1-flügelig	DK 900*1200	0.900	1.200
5				

**Fenstertür 2-flügelig**

1	Fenstertür 2-flügelig	DK 1800*2250 FB20	1.800	2.350
1				

13

